



Front Elevation

Plot 9

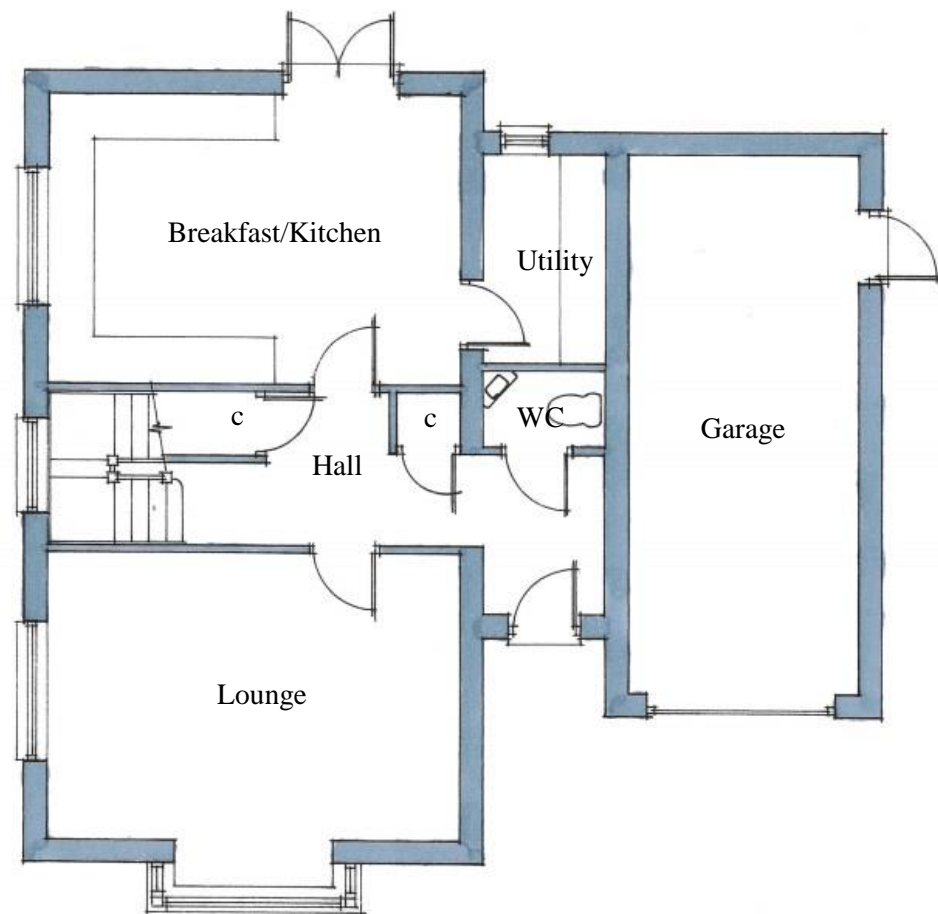
Ground Floor

Breakfast/Kitchen –	5.4m x 3.8m (17'-9" x 12'-6")
Lounge –	5.4m x 3.7m (17'-9" x 12'-2")
Utility –	1.6m x 2.7m (5'-3" x 8'-10")
WC –	1.6m x 1.0m (5'-3" x 3'-3")

First Floor

Bathroom –	2.2m x 3.8m (7'-3" x 12'-6")
Bedroom 1 –	4.9m x 5.0m (16'-1" x 16'-5")
Bedroom 2 –	3.1m x 3.8m (10'-2" x 12'-6")
Bedroom 3 –	3.0m x 3.7m (9'-10" x 12'-2")
Bedroom 4 –	2.3m x 3.7m (7'-7" x 12'-2")
En-suite –	1.85m x 2.15m (6'-1" x 7'-3")

Total Area – 139m² (1,496ft²)



Ground Floor Layout



First Floor Layout

