



Front Elevation

Plots 4 & 7

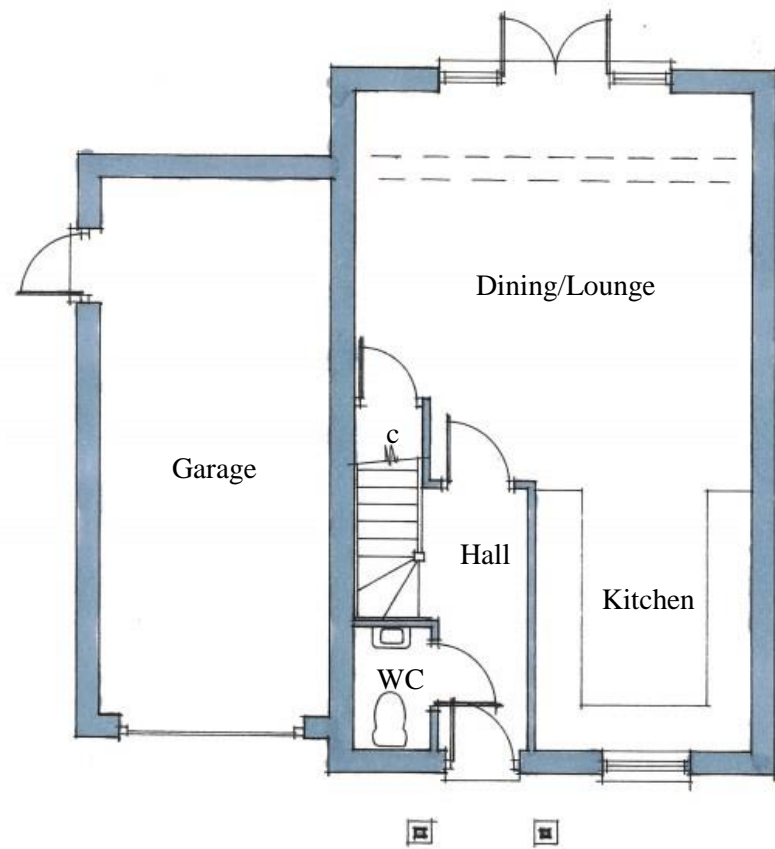
Ground Floor

Dining/Lounge –	5.2m x 4.9m (17'-1" x 16'-1")
Kitchen –	2.75m x 3.7m (9' x 12'-2")
WC –	1.0m x 1.6m (3'-3" x 5'-3")

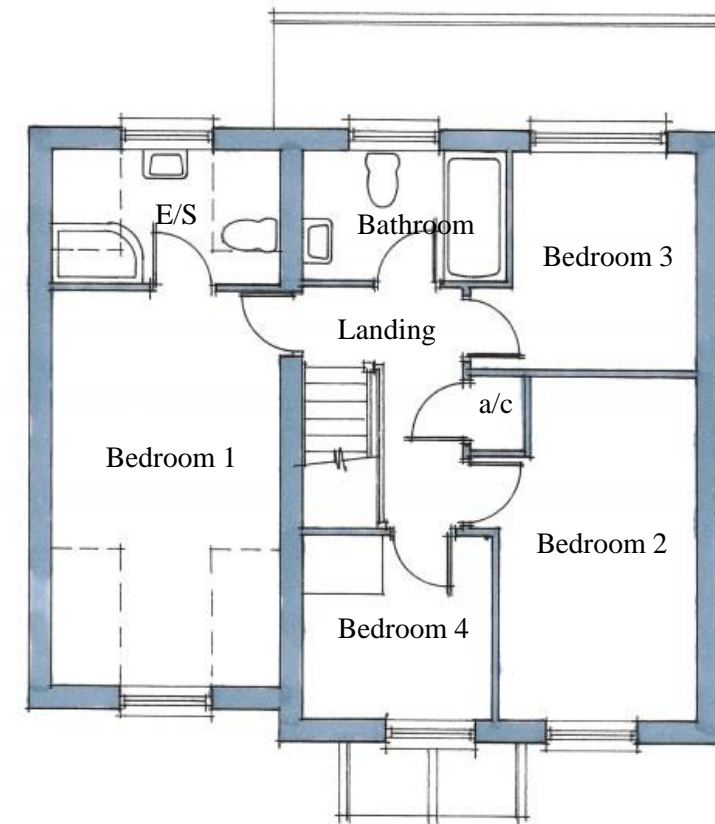
First Floor

Bathroom –	2.7m x 1.7m (8'-10" x 5'-7")
Bedroom 1 –	3.0m x 5.15m (9'-10" x 16'-11")
Bedroom 2 –	2.6m x 4.45m (8'-6" x 14'-7")
Bedroom 3 –	2.4m x 2.8m (7'-10" x 9'-2")
Bedroom 4 –	2.5m x 2.4m (8'-2" x 7'-10")
En-suite –	3.0m x 1.75m (9'-10" x 5'-9")

Total Area- 107m² (1,152ft²)



Ground Floor Layout



First Floor Layout