



Front Elevation

Plot 6

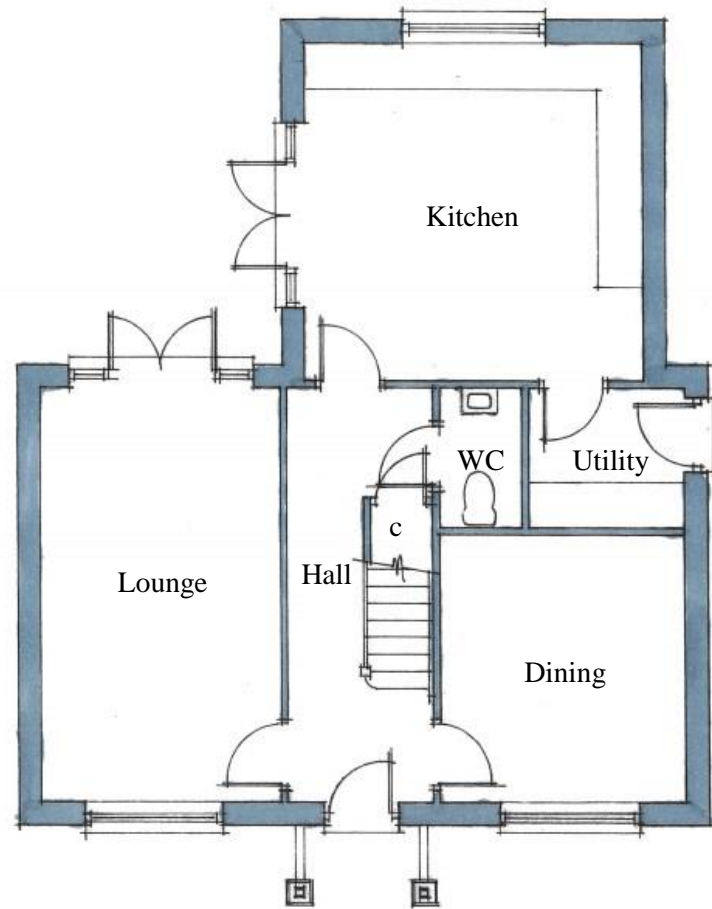
Ground Floor

Dining –	3.1m x 3.4m (10'-2" x 11'-2")
Kitchen –	4.35m x 4.35m (14'-3" x 14'-3")
Lounge –	3.1m x 5.35m (10'-2" x 17'-6")
Utility –	1.95m x 1.8m (6'-4" x 5'-11")
WC –	1.0m x 1.8m (3'-3" x 5'-11")

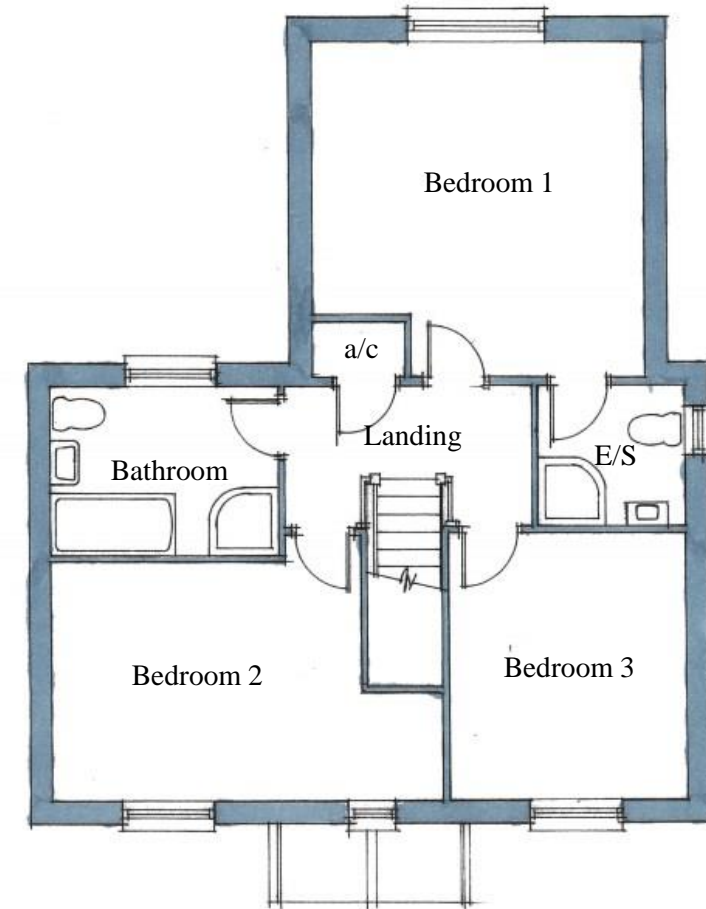
First Floor

Bathroom –	2.95m x 2.15m (9'-8" x 7')
Bedroom 1 –	4.35m x 4.35m (14'-3" x 14'-3")
Bedroom 2 –	5.1m x 3.05m (16'-9" x 10')
Bedroom 3 –	3.1m x 3.4m (10'-2" x 11'-2")
En-suite –	1.9m x 1.8m (6'-3" x 5'-11")

Total Area- 130.3m² (1,403ft²)



Ground Floor Layout



First Floor Layout