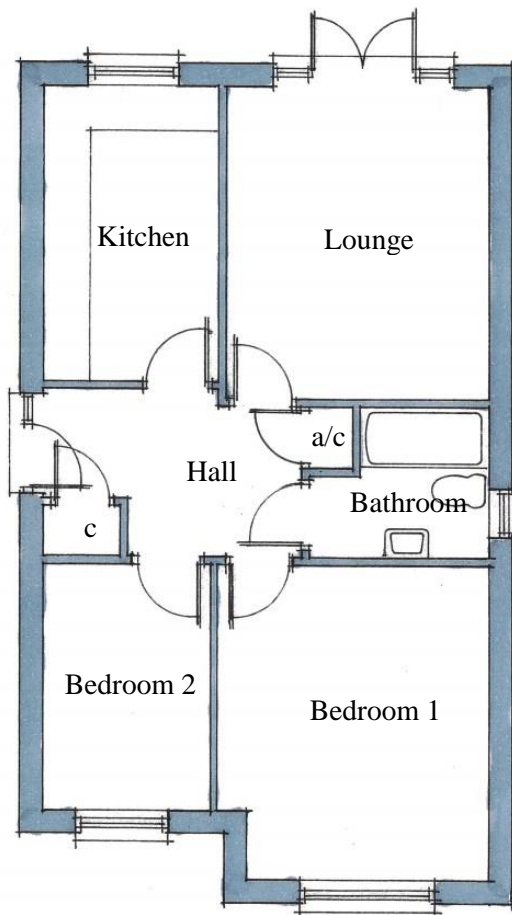




Front Elevation



Plots 1 & 2 (Handed)

Bathroom –	2.38m x 1.95m (7'-9" x 6'-5")
Bedroom 1 –	3.55m x 4.05m (11'-8" x 13'-3")
Bedroom 2 –	2.15m x 3.15m (7'-1" x 10'-4")
Kitchen –	2.25m x 3.85m (7'-4" x 12'-7")
Lounge –	3.45m x 4.05m (11'-3" x 13'-3")
<u>Total Area</u> –	58.9m ² (634ft ²)

