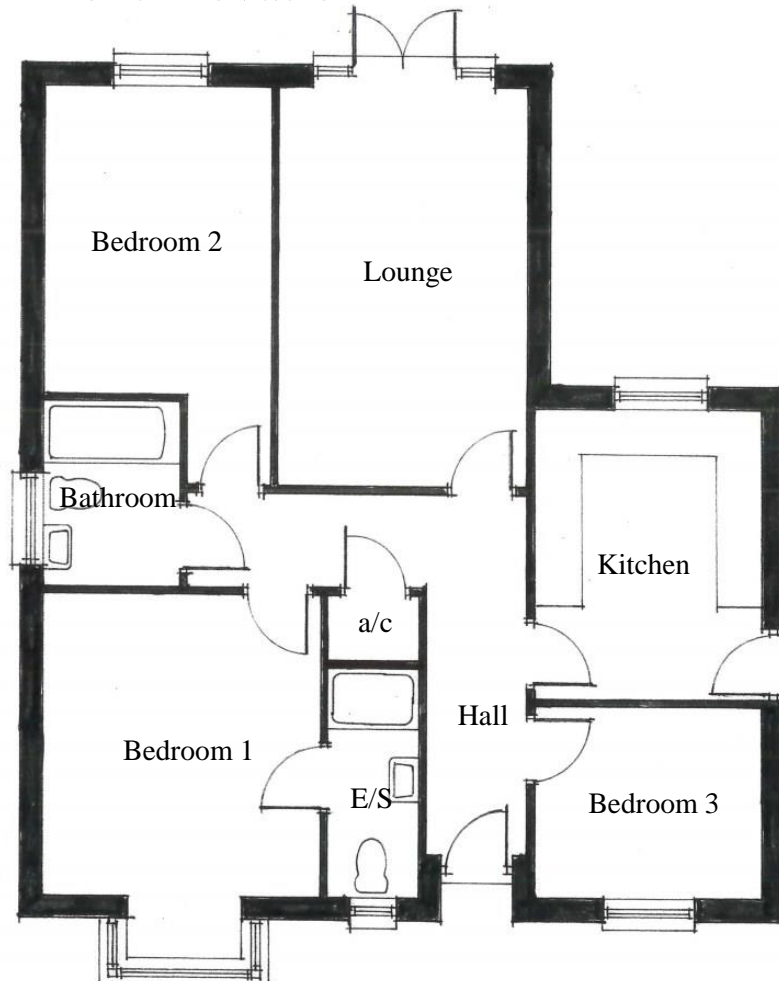




Front Elevation



Plot 1 & 2 (Handed)

Bathroom –	1.7m x 2.35m (5'-7" x 7' - 8")
Bedroom 1 –	3.57m x 3.95m (11'-8" x 12'-11")
Bedroom 2 –	2.95m x 3.95m (9'-8" x 12'-11")
Bedroom 3 –	2.95m x 2.45m (9'-9" x 8')
En-suite –	1.18m x 2.95m (3'-10" x 9'-8")
Kitchen –	2.95m x 3.75m (9'-8" x 12'-3")

Lounge –	2.95m x 5.15m (9'-8" x 16'-10")
Total Area –	87.7m ² (944ft ²)

