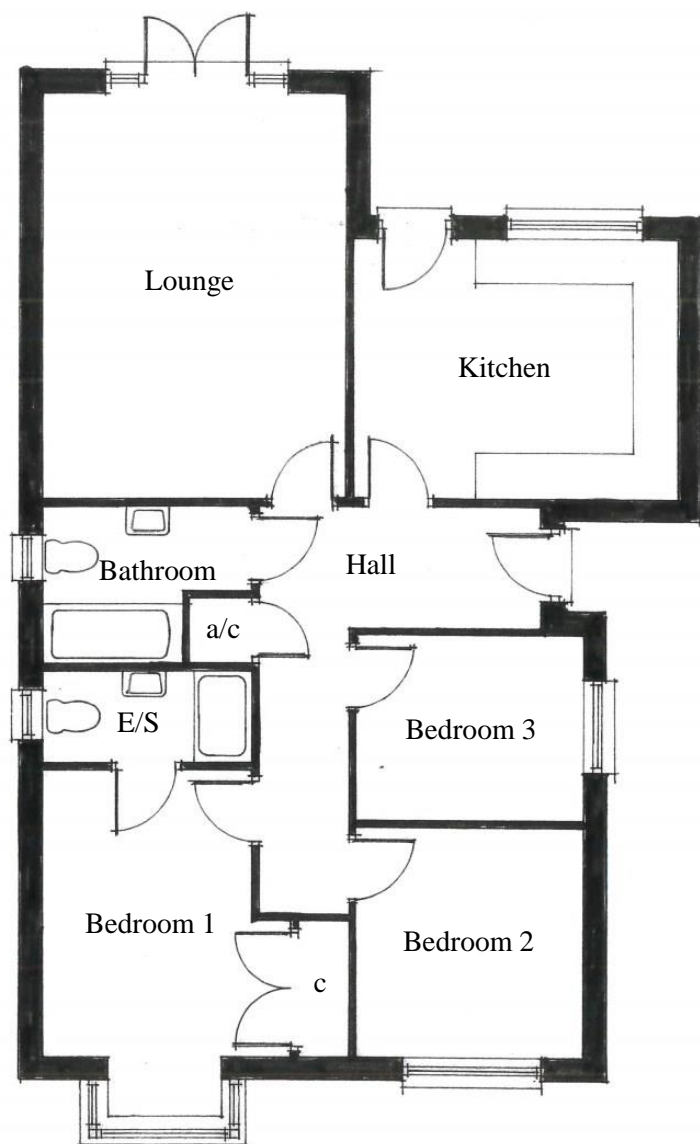




Front Elevation



Plots 3 & 4 (Handed)

Bathroom –
1.7m x 2.0m (5'-7" x 6' - 7")

Bedroom 1 –
2.7m x 3.67m (8'-10" x 12')

Bedroom 2 –
3.0m x 2.95m (9'-10" x 10')

Bedroom 3 –
3.0m x 2.37m (9'-10" x 7'-9")

En-suite –
2.7m x 1.18m (8'-10" x 3'-10")

Kitchen –
4.2m x 3.35m (13'-9" x 11')

Lounge –
3.95m x 5.25m (12'-11" x 17'-6")

Total Area –
89.7m² (967ft²)

