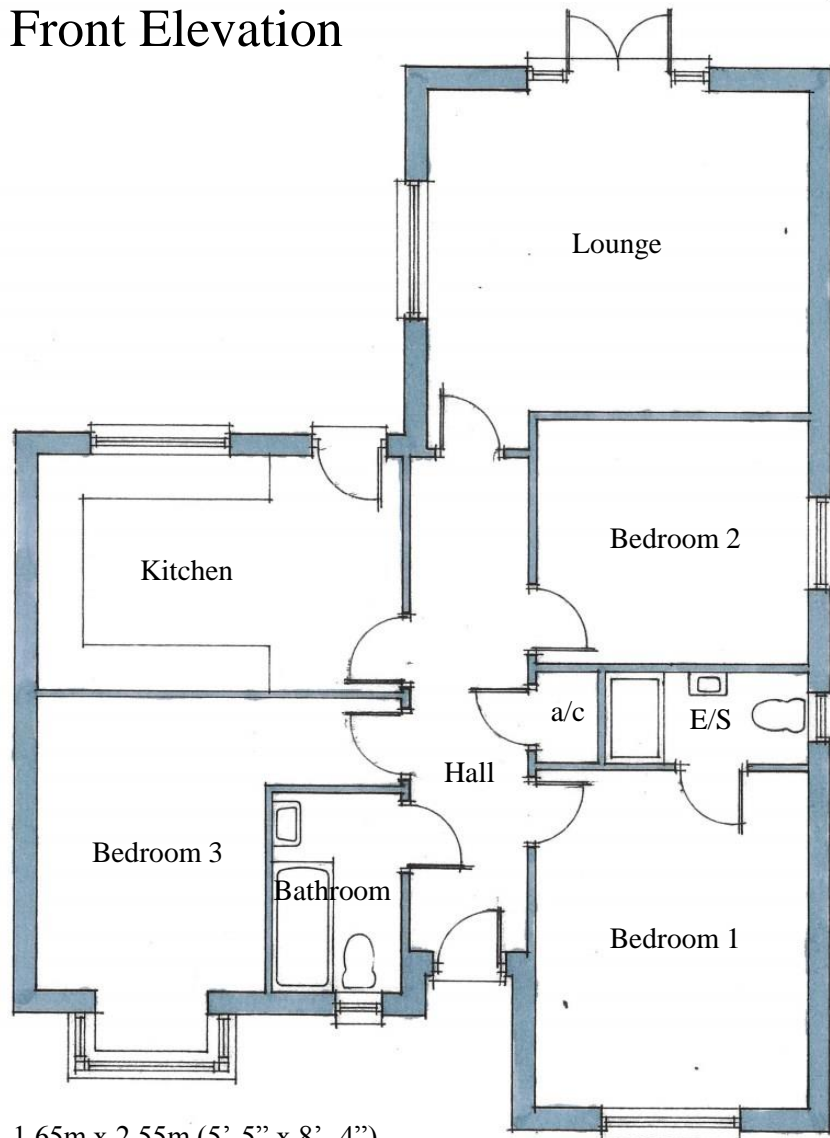




Front Elevation



Plots 3 & 5

Bathroom –	1.65m x 2.55m (5'-5" x 8'-4")
Bedroom 1 –	3.55m x 4.32m (12'-2" x 14'-2")
Bedroom 2 –	3.55m x 3.15m (12'-2" x 10'-4")
Bedroom 3 –	2.95m x 3.75m (9'-8" x 12'-3")
En-suite –	2.65m x 1.18m (8'-8" x 3'-10")
Kitchen –	4.75m x 3.05m (15'-7" x 10')
Lounge –	5.0m x 4.15m (16'-5" x 13'-7")
Total Area –	100.5m ² (1,082ft ²)

