

Plots 4 & 5 (Handed)

Ground Floor

Kitchen –	2.6m x 5.35m (8'-6" x 17'-6")
Lounge –	4.61m x 4.25m (15'-1" x 13'-11")
WC –	0.95m x 2.1m (3'-1" x 6'-11")

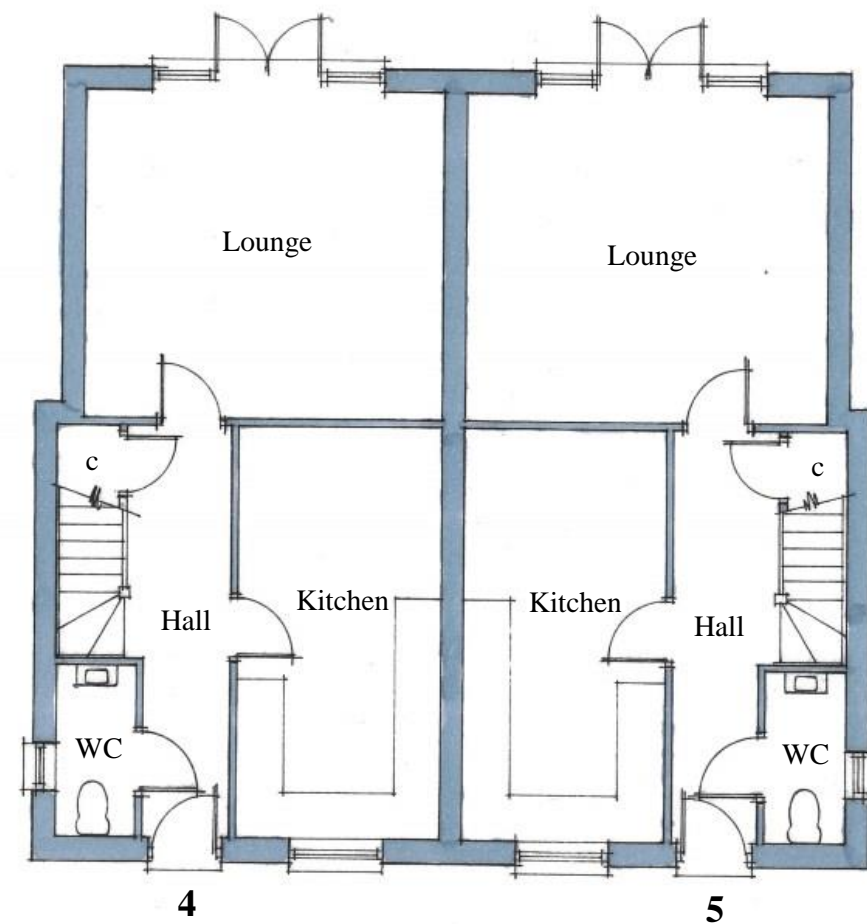
First Floor

Bathroom –	2.65m x 1.6m (8'-8" x 5'-3")
Bedroom 1 –	4.95m x 2.95m (16'-3" x 9'-8")
Bedroom 2 –	2.31m x 3.7m (7'-7" x 12'-1")
Bedroom 3 –	2.15m x 2.7m (7' x 8'-10")
En-suite –	2.65m x 1.05m (8'-8" x 3'-5")

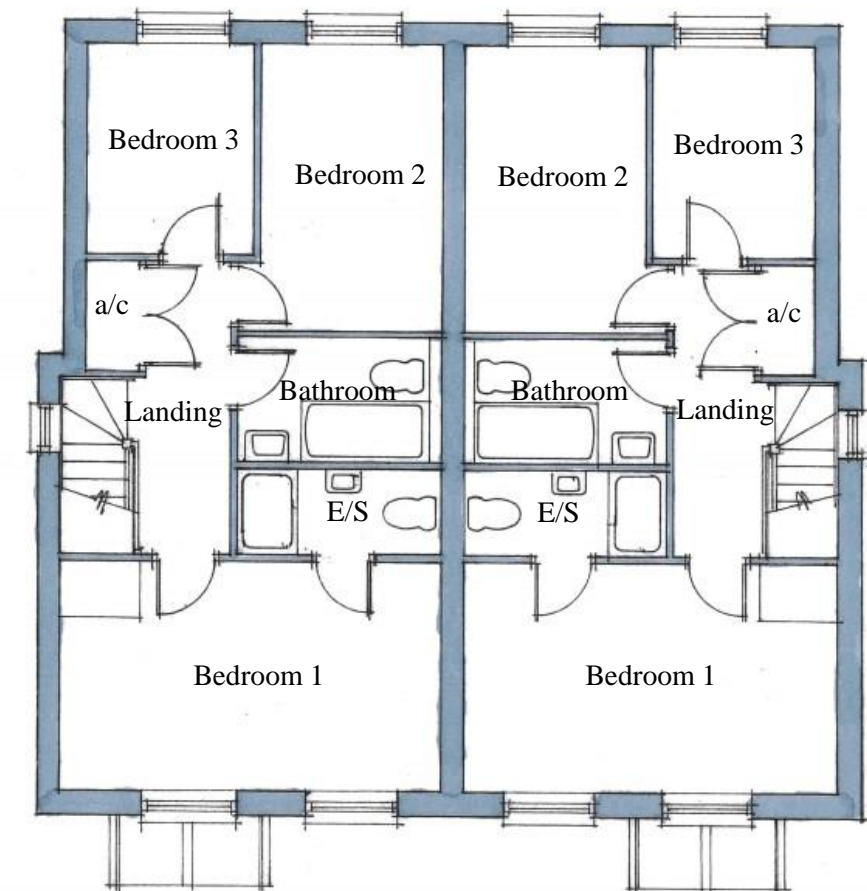
Total Area – 95.4m² (1,026ft²)



Front Elevation



Ground Floor Layout



First Floor Layout