



Front Elevation

Plot 1

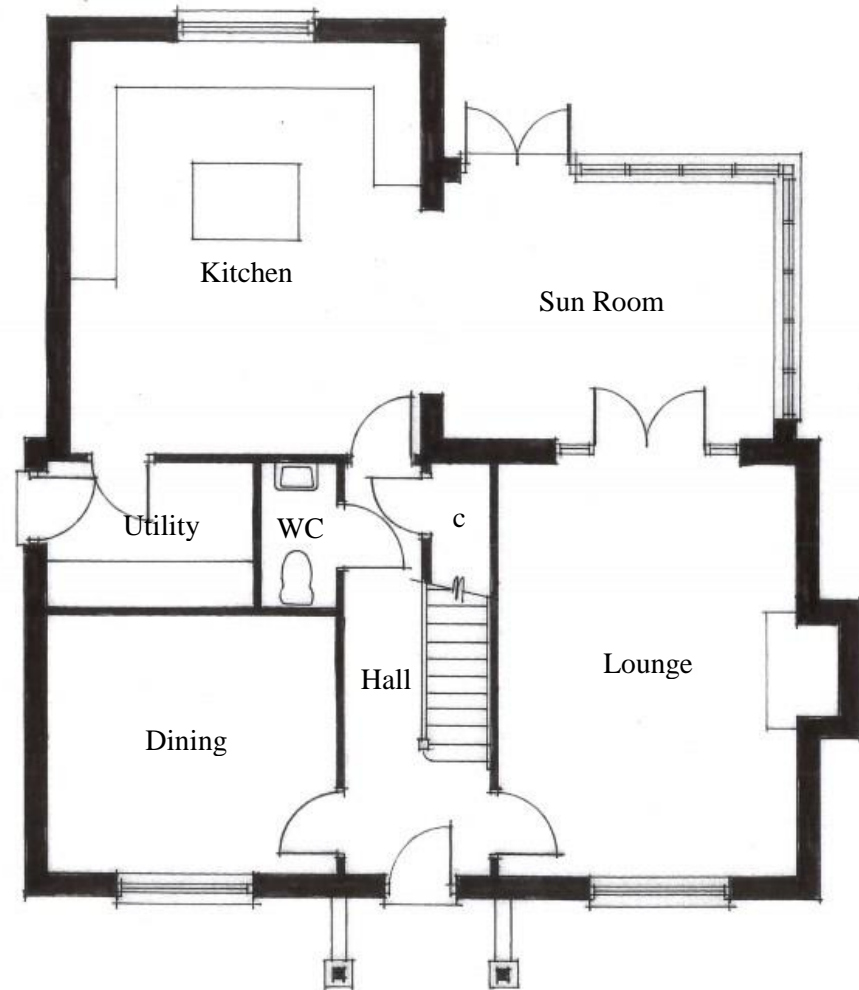
Ground Floor

Dining –	3.75m x 3.35m (12'-3" x 11')
Kitchen –	4.55m x 5.35m (14'-11" x 17'-7")
Lounge –	3.85m x 5.35m (12'-7" x 17'-7")
Sun Room -	4.17m x 3.35m (13'-8" x 11')
Utility –	2.65m x 1.85m (8'-8" x 6'-1")
WC –	0.95m x 1.85m (3'-1" x 6'-1")

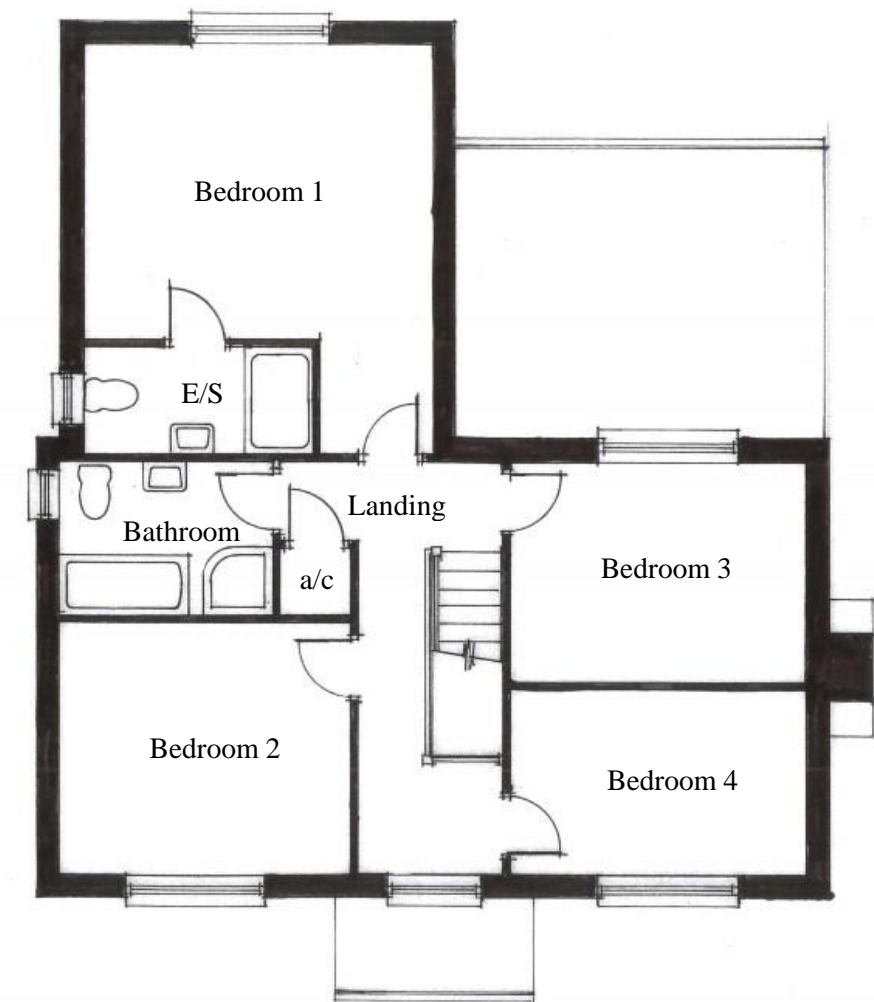
Total Area- 171m² (1,841ft²)

First Floor

Bathroom –	2.75m x 1.95m (9' - x 6'-5")
Bedroom 1 –	4.55m x 3.85m (14'-11" x 12'-7")
Bedroom 2 –	3.75m x 3.25m (12'-3" x 10'-8")
Bedroom 3 –	3.85m x 2.85m (12'-8" x 9'-4")
Bedroom 4 –	3.85m x 2.35m (12'-8" x 7'-8")
En-suite –	2.95m x 1.35m (9'-8" x 4'-5")



Ground Floor Layout



First Floor Layout