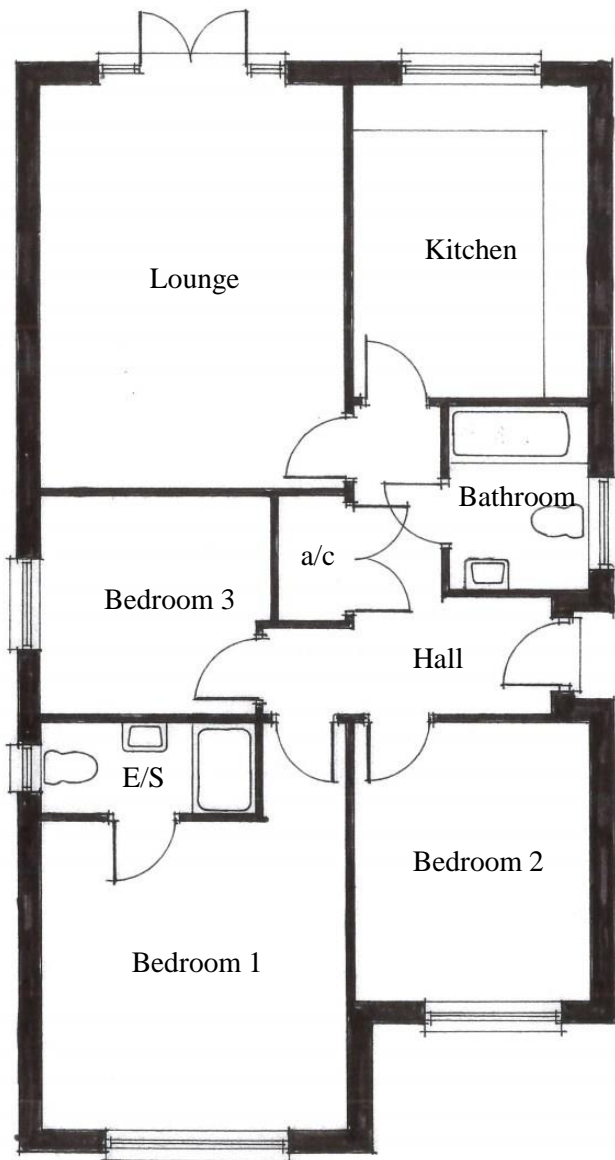




Front Elevation



Floor Layout

Plot 10

Bathroom –

1.8m x 2.37m (5'-11" x 7'-9")

Bedroom 1 –

4.25m x 3.92m (13'-11" x 12'-10")

Bedroom 2 –

3.05m x 3.55m (10' x 11'-8")

Bedroom 3 –

2.95m x 2.85m (9'-8" x 9'-4")

En-suite –

2.75m x 1.18m (9' x 3'-10")

Kitchen –

3.05m x 4.05m (10' x 13'-3")

Lounge –

3.95m x 5.25m (12'-11" x 17'-2")

Total Area –

93.2m² (1,003ft²)

