



Front Elevation

Plot 4

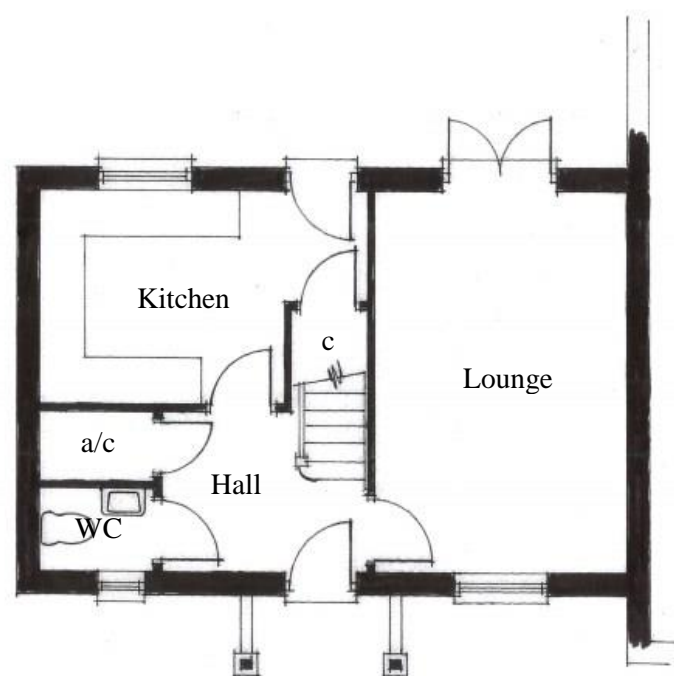
Ground Floor

Kitchen –	3.15m x 2.75m (10’-4” x 9’)
Lounge –	3.25m x 4.95m (10’-8” x 14’-9”)
WC –	1.45m x 1.05m (4’-9” x 3’-5”)

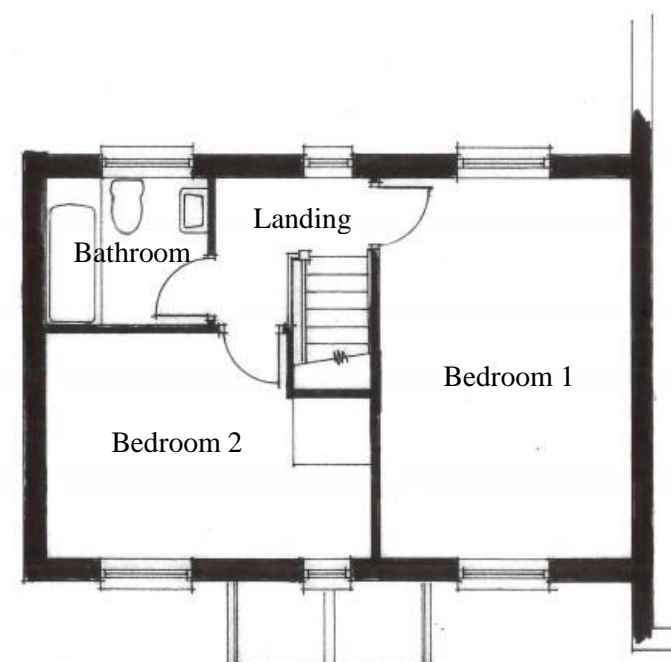
Total Area – 77m² (829ft²)

First Floor

Bathroom –	2.1m x 1.85m (6’-10”- x 6’-1”)
Bedroom 1 –	3.25m x 4.95m (10’-11” x 14’-9”)
Bedroom 2 –	4.35m x 2.95m (14’-3” x 9’-8”)



Ground Floor Layout



First Floor Layout