



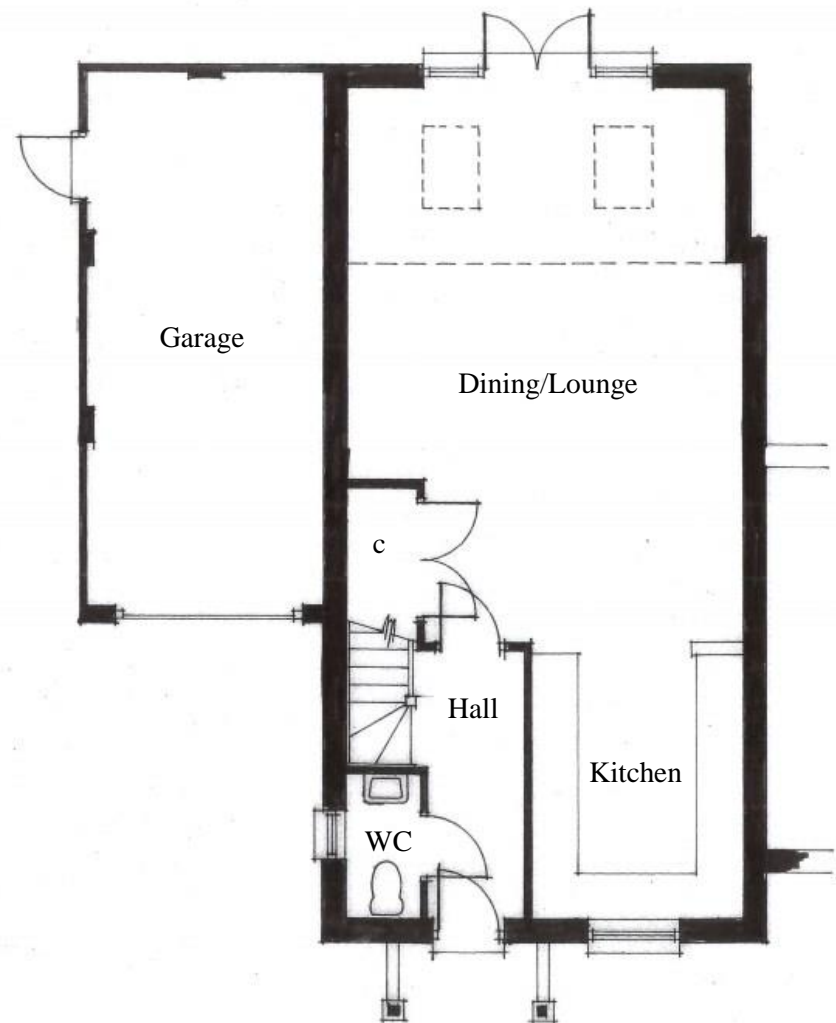
Plot 6

Ground Floor

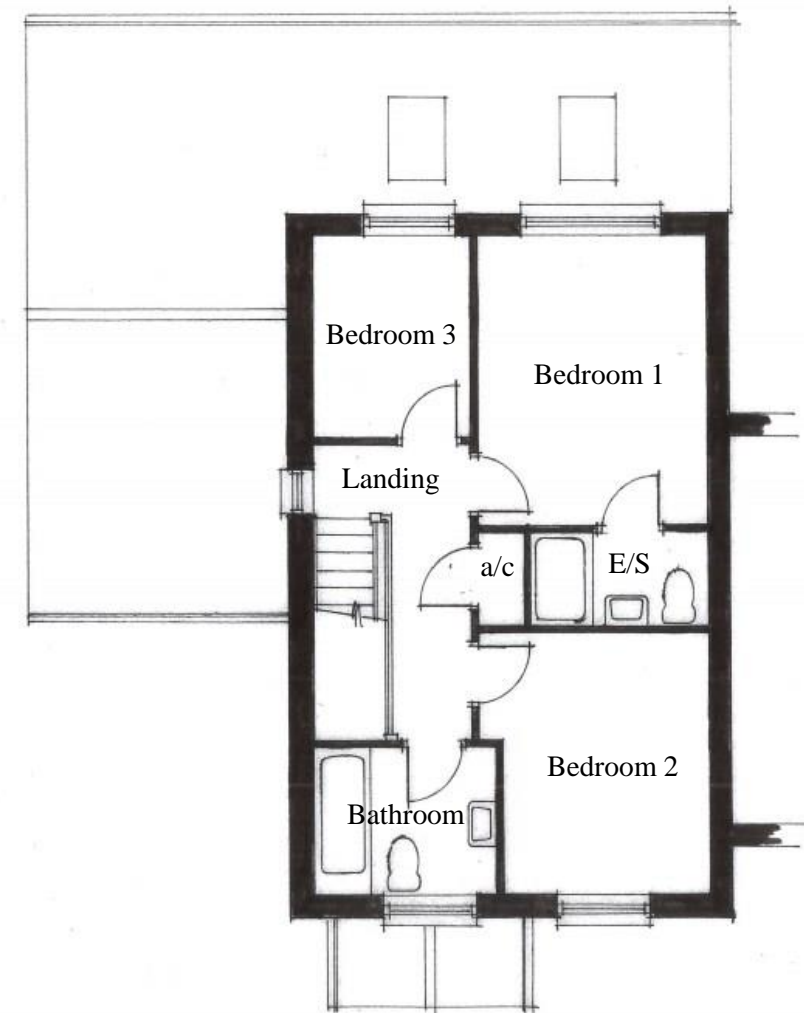
Dining/Lounge –	5.15m x 7.25m (16'-11" x 23'-9")
Kitchen –	2.7m x 3.55m (8'-10" x 11'-8")
WC –	0.95m x 1.85m (3'-1" x 6'-1")
Total Area –	101m ² (1,087ft ²)

First Floor

Bathroom –	2.35m x 1.85m (7'-4" x 6'-1")
Bedroom 1 –	2.95m x 3.75m (9'-8" x 12'-3")
Bedroom 2 –	2.65m x 3.32m (8'-8" x 10'-11")
Bedroom 3 –	2.05m x 2.6m (6'-8" x 8'-6")
En-suite –	2.25m x 1.18m (7'-4" x 3'-11")



Ground Floor Layout



First Floor Layout