



Front Elevation

Plot 5

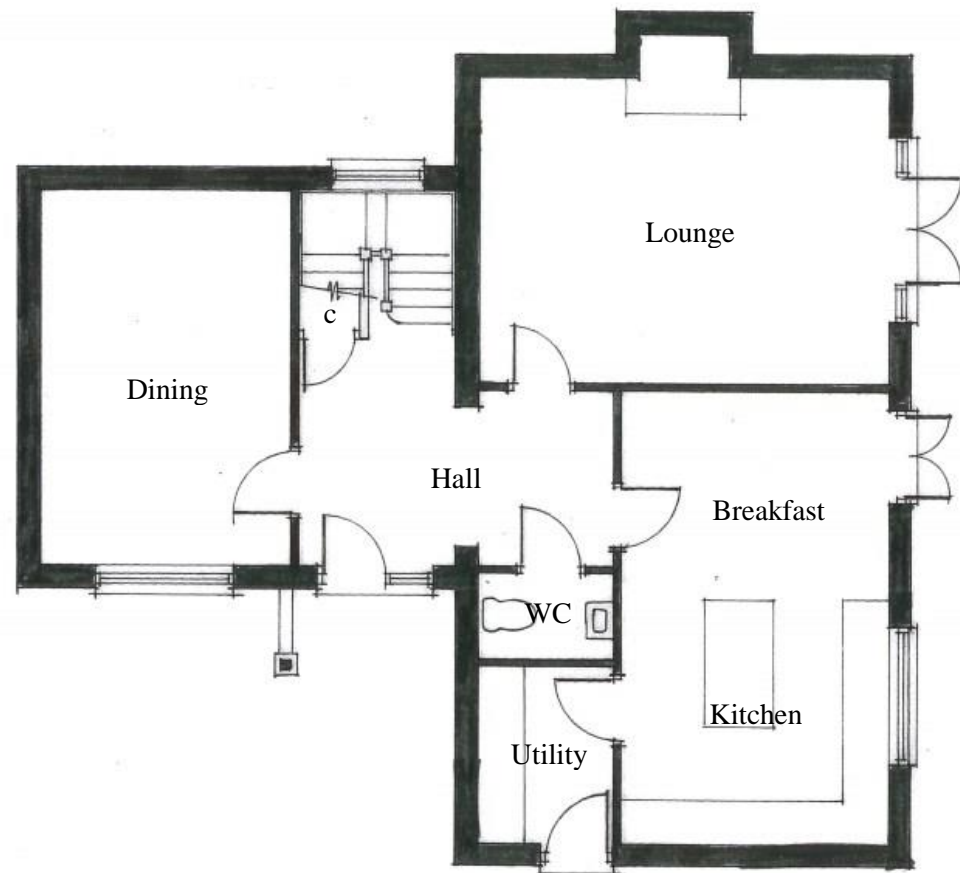
Ground Floor

Breakfast -	3.45m x 2.35m (11'-3" x 7'-8")
Dining -	3.25m x 4.85m (10'-7" x 15'-10")
Kitchen -	3.45m x 3.45m (11'-3" x 11'-3")
Lounge -	5.35m x 3.95m (17'-6" x 12'-11")
Utility -	1.75m x 2.25m (5'-8" x 7'-4")
WC -	1.05m x 2.25m (3'-5" x 7'-4")

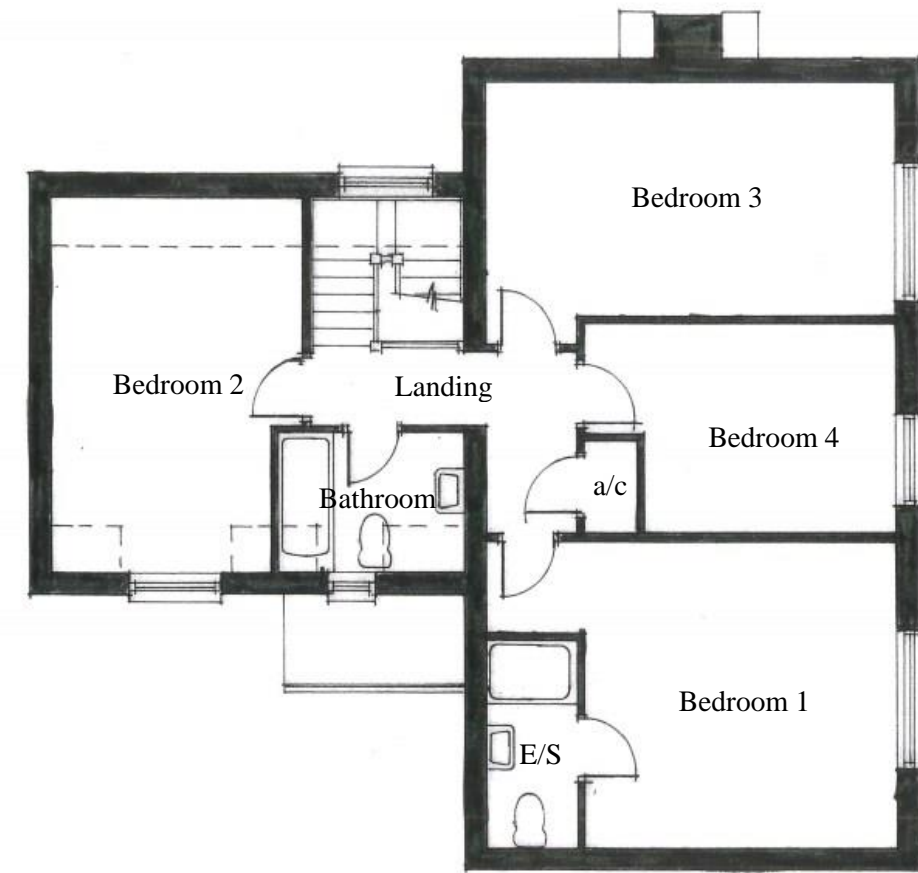
First Floor

Bathroom -	2.35m x 1.68m (7'-8" x 5'-6")
Bedroom 1 -	4.02m x 3.95m (13'-2" x 12'-11")
Bedroom 2 -	3.25m x 4.85m (10'-7" x 15'-10")
Bedroom 3 -	3.0m x 5.35m (9'-10" x 17'-6")
Bedroom 4 -	3.25m x 2.7m (10'-7" x 8'-10")
En-suite -	1.18m x 2.65m (3'-10" x 8'-8")

Total Area- 164m² (1,765ft²)



Ground Floor Layout



First Floor Layout

