



Front Elevation

Plot 7

Ground Floor

Breakfast -	3.3m x 2.25m (10'-10" x 7'-4")
Dining -	4.85m x 3.3m (15'-11" x 10'-10")
Kitchen -	6.35m x 2.95m (20'-10" x 9'-8")
Lounge -	3.85m x 5.35m (12'-7" x 17'-6")
Utility -	1.75m x 2.2m (5'-9" x 7'-2")
WC -	0.95m x 2.2m (3'-1" x 7'-2")

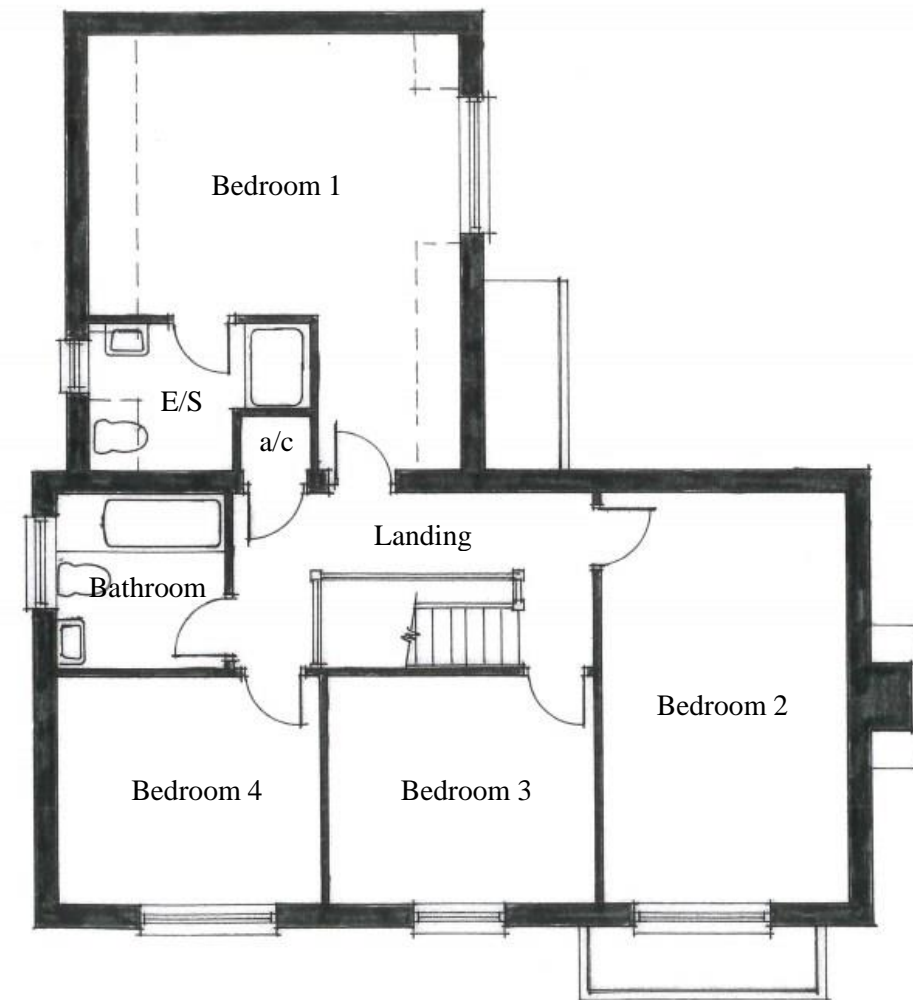
Total Area- 171m² (1,842ft²)

First Floor

Bathroom -	2.15m x 2.25m (7'- x 7'-4")
Bedroom 1 -	4.85m x 3.55m (15'-11" x 11'-7")
Bedroom 2 -	3.2m x 5.35m (10'-6" x 17'-6")
Bedroom 3 -	3.45m x 2.95m (11'-4" x 9'-8")
Bedroom 4 -	3.4m x 2.95m (11'-2" x 9'-8")
En-suite -	2.85m x 1.95m (9'-4" x 6'-5")



Ground Floor Layout



First Floor Layout

